

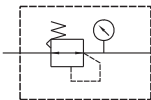
# MAR501 series

## AIR UNIT (R.UNIT)



Option: MP41

### Symbol



### Specification

Model	MAR501	
Bore No.	20A	25A
Port size	3/4	1
Medium	Air	
Max. operating pressure	1.5 MPa	
Proof pressure	2 MPa	
Regulated pressure range	0.1~0.85 MPa	
Repeatability	± 7% F.S.	
Ambient temperature	- 5~ + 60 (No freezing)	
Attachment	Pressure gauge (PG-20), L type bracket	
Weight	1460g	

### Order example

MAR501 - 20A - □ - E1 - □

MODEL

BORE SIZE

20A : 3/4  
25A : 1

OPTION

Blank: Pressure gauge (PG-20)  
C: External pressure gauge (PG-40)

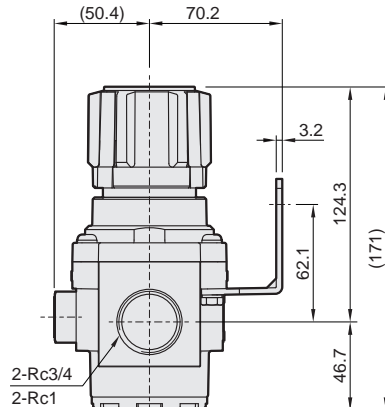
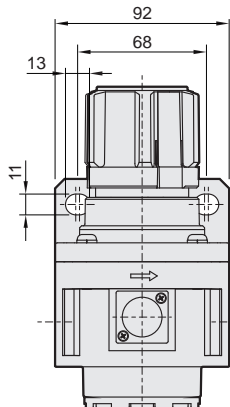
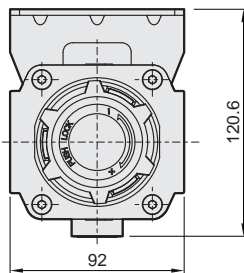
PRESSURE SWITCH

E1: MP41P-02  
E2: MP41P-02-QD  
E3: MP41P-02-J  
E4: MP41P-02-QD-J  
E5: MP41P-04  
E6: MP41P-04-QD  
E7: MP41P-04-J  
E8: MP41P-04-QD-J

PORT THREAD

Blank: Rc thread  
G: G thread  
NPT: NPT thread

Option -C and -E\* cannot be selected simultaneously.  
Refer to page 5-11 for the option of digital pressure switch MP41.



### Pressure characteristics

